



## **ADDICT GEL**



[www.lodi-group.fr](http://www.lodi-group.fr)

# ADDICT GEL - SPECIFICATIONS

- Gel bait ready to use against cockroaches
- Dinotefuran 2%
- Gel ready to use
- Syringe / tube 30g
- Box of 4 tubes



# ADDICT GEL - SPECIFICATIONS

- Effective on :
  - Blattellidae
  - Blattelid cockroaches
  - *B. germanica*, *B. orientalis* and other common cockroaches
- 300 spots per tube



# ADDICT GEL - APPLICATION

- Apply in 0,1g spots (with each spot containing 0,002g of Dinotefuran)
- 2-4 spots per m<sup>2</sup> for small cockroach species (*B. germanica*)
- 4 -8 spots per m<sup>2</sup> for large cockroach species (*B. orientalis*)
- Apply a maximum of 0,8g of product per m<sup>2</sup> for heavy infestations
- Up to 16 spots when treating a house
- Up to 72 spots when treating public buildings
- In case of heavy infestation, a second application may be performed after 7 days





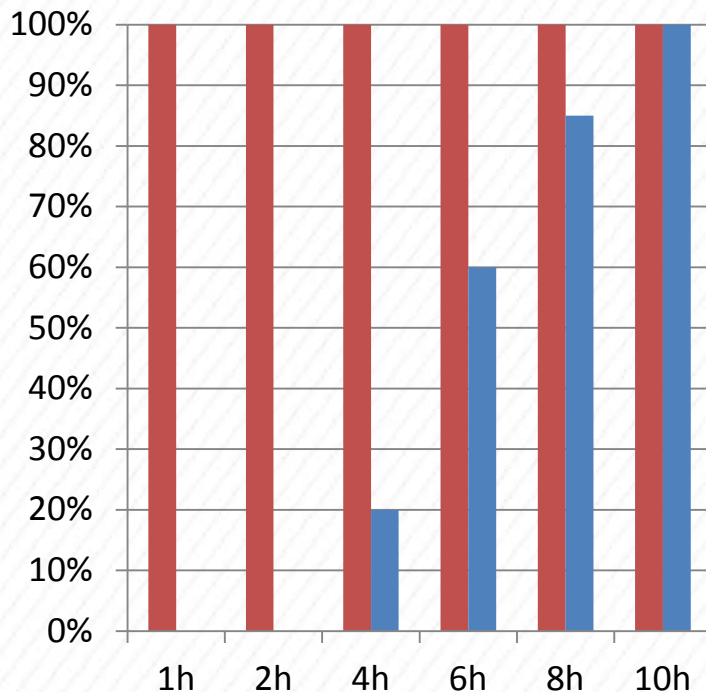
# ADDICT GEL – COMPARATIVE TEST 1

- **ADDICT GEL (DINOTEFURAN 2%) VS GOLIATH GEL (FIPRONIL 0,05%)**
- Method :
  - Continuous contact test
  - 1 *B. germanica* adult in contact with **GOLIATH** vs 1 *B. germanica* adult in contact with **ADDICT**
  - Repeat on 20 cockroaches
  - 0,5g of gel bait for each test
- Evaluate Mortality and LT 50



# ADDICT vs GOLIATH – RESULTS 1

### Mortality



- 100% killed in less than an hour

■ ADDICT GEL  
■ GOLIATH GEL

### LT 50

- 50% killed in less than 14 minutes (5h20 for GOLIATH)
- **ADDICT** acts 23 times faster

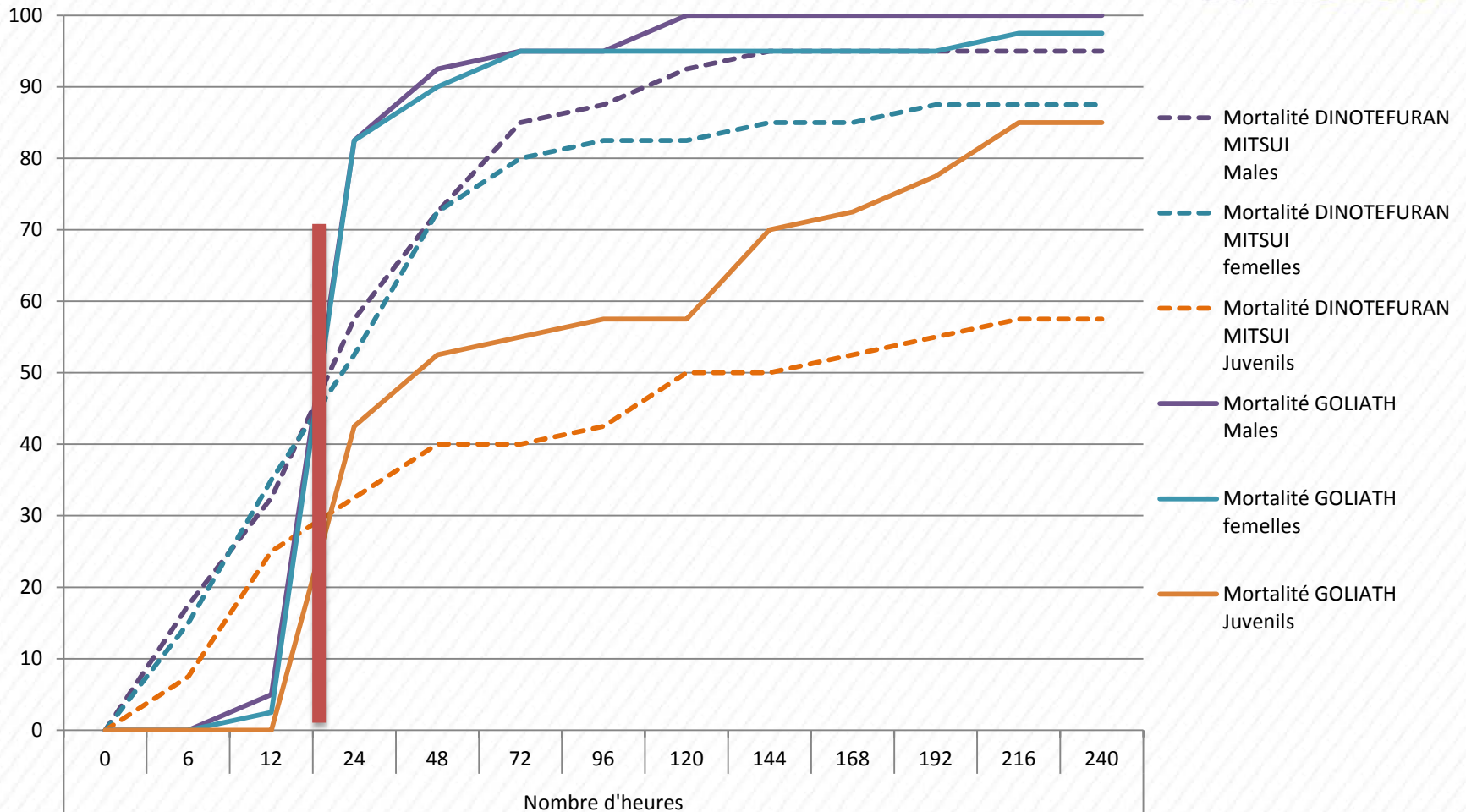


# ADDICT GEL – COMPARATIVE TEST 2

- **ADDICT GEL (DINOTEFURAN 2%) VS GOLIATH GEL (FIPRONIL 0,05%)**
- Method :
  - 30 *B. germanica* adults and juveniles in contact with **GOLIATH** vs 30 *B. germanica* adults and juveniles in contact with **ADDICT**
  - 10 males / 10 females / 10 juveniles
  - 0,5g of gel bait for each test
- Evaluate Mortality



# ADDICT vs GOLIATH – RESULTS 2





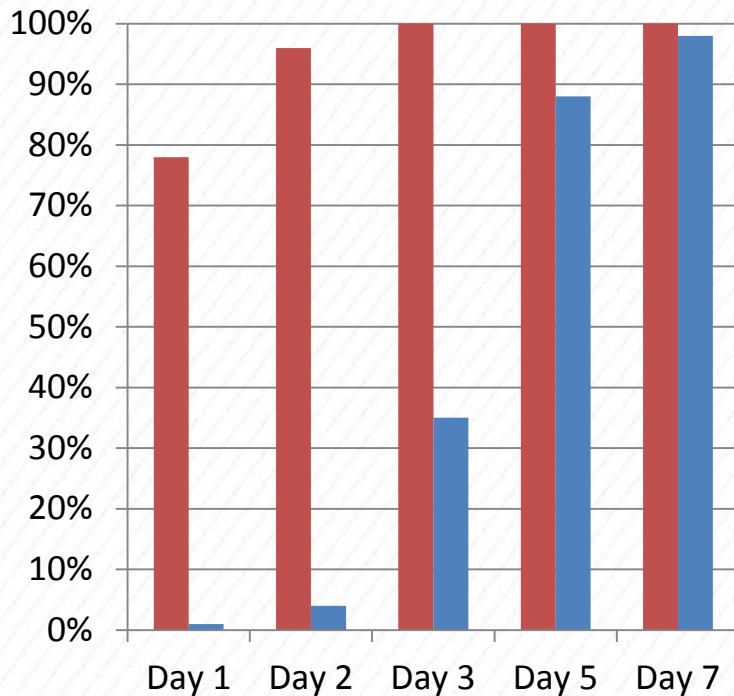
# ADDICT GEL – COMPARATIVE TEST 3

- **ADDICT GEL (DINOTEFURAN 2%) VS PRODUCT A (HYDRAMETHYLNON 2,15%)**
- Method :
  - Arbitrary feeding test
  - 100 *B. germanica* adults in contact with **ADDICT** vs 100 *B. germanica* adults in contact with an **Hydraméthylnon** gel bait
  - 50% males / 50% females
  - 4 slides with 0,25g of gel bait for each
- Evaluate Mortality et LT 50



# ADDICT vs HYDRAMETHYLNON

### Mortality



- 78% killed in 24 hours
- 100% killed in less than 3 days

■ ADDICT GEL  
■ PRODUIT A

### DL 50

- 50% killed in 2 hours (2 days and 8 hours for the competitor)
- **ADDICT** acts 27 times faster



# ADDICT GEL – BULLET POINTS

- Exclusivity LODI GROUP in 26 countries
- Shock effect
- Broad spectrum :
  - *B. germanica*
  - *B. orientalis*
  - Other common species of cockroaches
- Non repellent
- No known resistance



# ADDICT GEL – A REDUCED RISK

- Low impact on human health
- Lower toxicity to non-target organisms (birds, fish, plants)
- Low potential for groundwater contamination
- Low use rates
- Low pest resistance potential
- Compatible with Integrated Pest Management (IPM) practices







[www.lodi-group.fr](http://www.lodi-group.fr)