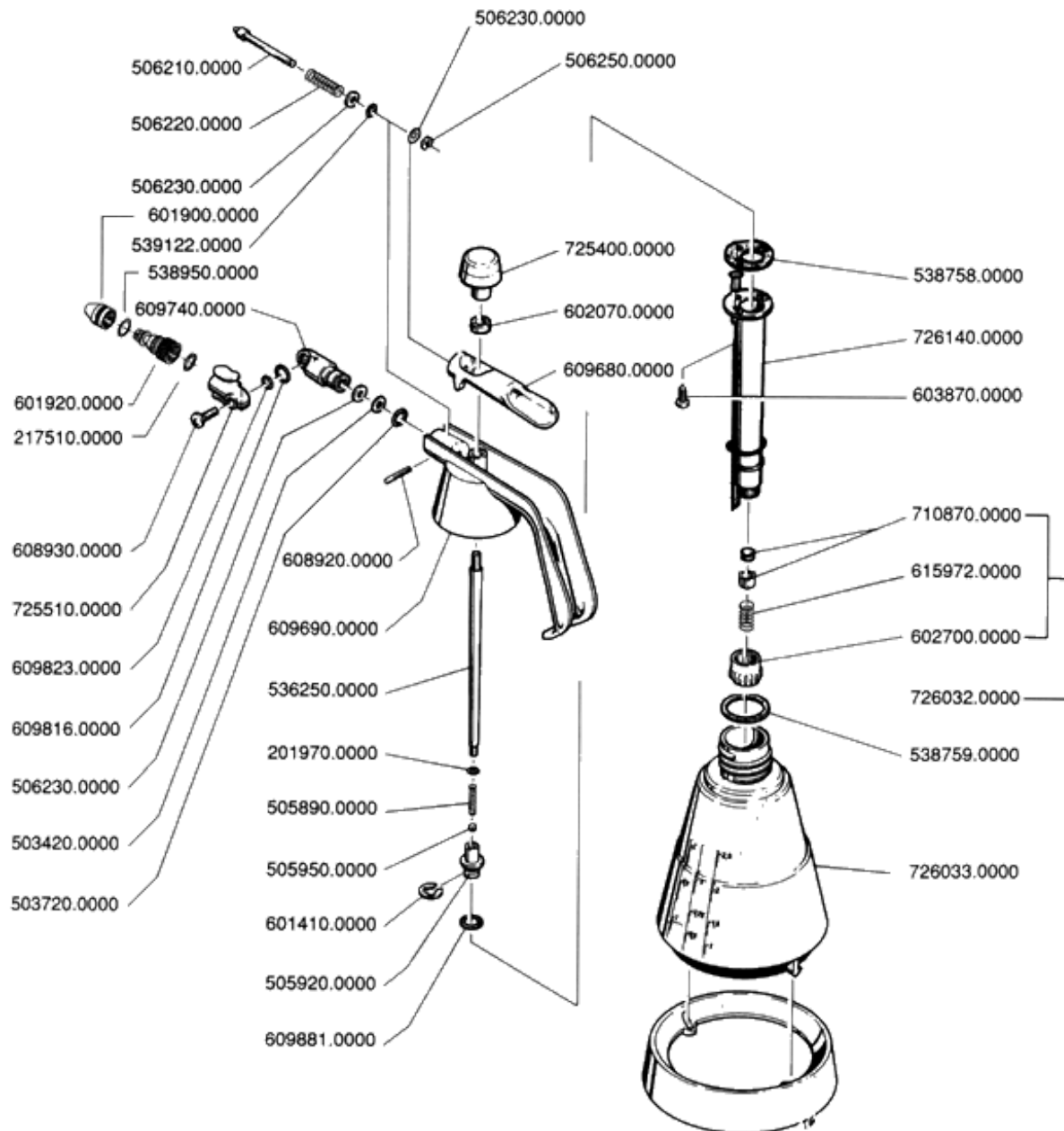


SERVICE INFORMATION FOR 'SPECIAL' 89 - 1 LITRE SPRAYER

COMPONENT IDENTIFICATION DIAGRAM



COMPONENT PART NUMBERS & DESCRIPTIONS

Part No. Description

- 201970 "O" Ring 6 x 2
- 217510 "O" Ring 9 x 1.5
- 503420 "O" Ring 3.3 x 2.5
- 503720 "O" Ring 9 x 2
- 505890 Relief valve spring

Part No. Description

- 609340 Screw for nozzle knuckle
- 609680 Trigger valve lever
- 609690 Pump head / handle moulding
- 609740 Body side of knuckle joint

505920 Relief valve housing
505950 Relief valve ball
506210 Delivery valve spindle
506220 Delivery valve spring
506230 Washer
506250 Retaining clip
536250 Piston rod - bare
538758 Gasket - pump barrel to head
538759 Seal - pump to container
538760 Spindle sealing washer
538950 "O" Ring for nozzle
601410 Retaining clip for piston
601900 Nozzle cap
601920 Nozzle body
602070 Buffer washer for pump
602700 Footvalve retaining cap
603870 Screw for pump barrel
608920 Retaining pin for nozzle holder

609816 "O" Ring for knuckle joint
609823 "O" Ring for knuckle joint
609881 Piston "O" ring
615972 Footvalve spring
710870 Footvalve poppet
725400 Pump handle
725510 Nozzle side of knuckle joint
726033 Container with base ring
726140 Pump barrel

Repair Kits & Assemblies

726036 Complete adjustable nozzle
726032 Footvalve component kit
726143 Complete seal kit
726297 Pump barrel complete
726298 Piston rod c/w relief valve