

## **PEST PROOFING SOLUTIONS FOR ALL TYPES OF ENTRANCE SYSTEMS AND BUILDING COMPONENTS!**

### **RAXIT SEALS' UNIQUE PATENTED TECHNOLOGY**

*The Raxit Seals pest proofing products are developed in the flexible and extremely durable rubber material Santoprene™. Along the length of the Raxit Seals are 1mm inlaid acid resistant stainless steel wires, which makes the seals impossible for rodents to gnaw through. The Raxit Seals have undergone – and successfully passed - the **toughest tests** for rodent penetration and general durability for any sweeps in the market. Making Raxit Seals the safest choice!*

**IMPORTANT:** All Raxit Seals have a waved/corrugated surface which prevents the inlaid steelwires from sliding.



### **RAXIT READY-TO-USE - FEATURES AND BENEFITS**

- A versatile product which can be used to solve most pest proofing task.
- The Raxit Seals' inlaid steel wires are developed so that the seal will return to its original shape, after deformation. Useful in entrance settings with uneven terrain.
- High cost effectiveness compared to alternative products due to: moderate pricing, easy and laborsaving installation and long durability.
- Successfully passed the toughest accredited tests for rat and mice penetration (respectively for rats 14 days and mice 70 days).
- Successfully passed accredited tests that concluded the Raxit Seals as a great climate barrier and water intrusion barrier.
- All materials used are non-toxic, the seal's color does not spread on surfaces and easy to clean (can be high pressure washed).
- Insect barrier at the bottom of the seal which ensures the Raxit Seal can fit closely to terrain. prevents small insects to pass under the seal.
- Professionally packed with an easy-to-understand mounting guide inside the packaging.
- Review the Raxit Seal periodically for gnawmarks, or other damages. Contact your Pest Control Operator as required.

**BEST IN TEST**

### **PRODUCT SPECIFICATIONS**

- **Seal length** - 1 meter and 3 meter.
- **Seal height** - 20mm, 30mm and 40mm.
- **Weight** - 380 gram /meter.
- **Seal color** - Anthracite gray (more colors available upon request).
- **Aluminum color** - Natural and RAL 9005 (more colors available upon request).
- **Distance between bottom edge and first steel wire** - 3mm i.e. too little for a mice to squeeze through.
- **Distance between inlaid steel wires** - 5mm.
- **Temperature range** - -40 celsius to 60 celsius.
- **Shore A hardness** - Around 80.
- **Thermal expansion and contraction** - Insignificant.

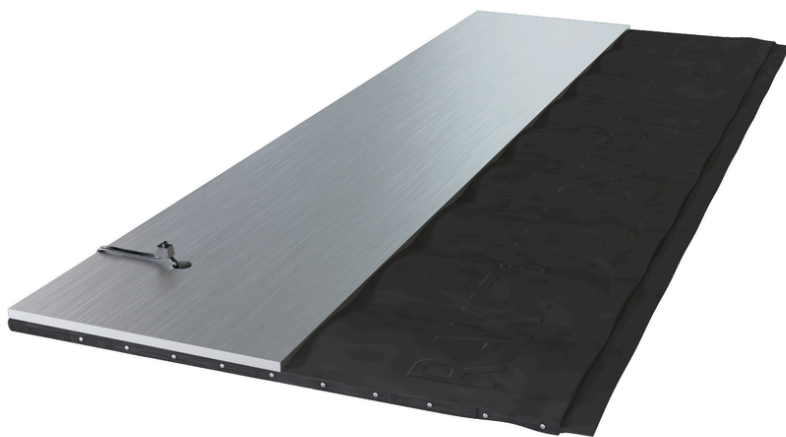


# PEST PROOFING SOLUTIONS FOR ALL TYPES OF ENTRANCE SYSTEMS AND BUILDING COMPONENTS

## ➔ RAXIT SEALS' UNIQUE PATENTED TECHNOLOGY

The Raxit Seals pest proofing products are developed in the flexible and extremely durable rubber material Santoprene™. Along the length of the Raxit Seals are 1mm inlaid acid resistant stainless steel wires, which makes the seals impossible for rodents to gnaw through. The Raxit Seals have undergone – and successfully passed - the **toughest tests** for rodent penetration and general durability for any sweeps in the market. Making Raxit Seals the safest choice!

**IMPORTANT:** All Raxit Seals have a waved/corrugated surface which prevents the inlaid steelwires from sliding.



## ➔ RAXIT SEAL & STAINLESS STEEL STRIP - FEATURES AND BENEFITS

**BEST IN TEST**

- Successfully passed the toughest tests for rat and mice penetration (respectively for rats 14 days and mice 70 days).
- Extremely durable stainless steel strip, useful in settings with heavy traffic from pallet-jacks, etc.
- Extremely durable and flexible seal. The Santoprene™ material will return to its original shape, after deformation. Useful in entrance settings with uneven terrain.
- The Raxit Seals' inlaid steel wires are developed so that the seal will return to its original shape, after deformation. Useful in entrance settings with uneven terrain.
- Despite being the safest choice for pest proofing, Raxit Seals are also a cost effective solution comparing to alternatives in the market.
- Successfully passed tests that concluded the Raxit Seals as a great climate barrier and water intrusion barrier.
- All materials used are non-toxic, the seal's color does not spread on surfaces and easy to clean (can be high pressure washed).
- Insect barrier at the bottom of the seal which ensures the Raxit Seal can fit closely to terrain. prevents small insects to pass under the seal.
- Professionally packed with an easy-to-understand mounting guide inside the packaging.
- Review the Raxit Seal periodically for gnawmarks, or other damages. Contact your Pest Control Operator as required.

## ➔ PRODUCT SPECIFICATIONS

- **Seal length** - 1 meter.
- **Seal height** - 20mm and 30mm.
- **Weight** - 900 gram.
- **Seal color** - Anthracite gray (more colors available upon request).
- **Distance between bottom edge and first steel wire** - 3mm i.e. too little for a mice to squeeze through.
- **Distance between inlaid steel wires** - 5mm.
- **Temperature range** - -40 celsius to 60 celsius.
- **Shore A hardness** - Around 80.
- **Thermal expansion and contraction** - Insignificant.



## PEST PROOFING SOLUTIONS FOR ALL TYPES OF ENTRANCE SYSTEMS AND BUILDING COMPONENTS!

### ➔ RAXIT SEALS' UNIQUE PATENTED TECHNOLOGY

The Raxit Seals pest proofing products are developed in the flexible and extremely durable rubber material Santoprene™. Along the length of the Raxit Seals are 1mm inlaid acid resistant stainless steel wires, which makes the seals impossible for rodents to gnaw through. The Raxit Seals have undergone – and successfully passed - the **toughest tests** for rodent penetration and general durability for any sweeps in the market. Making Raxit Seals the safest choice!

**IMPORTANT:** All Raxit Seals have a waved/corrugated surface which prevents the inlaid steelwires from sliding.



### ➔ RAXIT SEAL - FEATURES AND BENEFITS

**BEST IN TEST**

- A versatile product which can be used to solve most pest proofing task.
- The Raxit Seals' inlaid steel wires are developed so that the seal will return to its original shape, after deformation. Useful in entrance settings with uneven terrain.
- High cost effectiveness compared to alternative products due to: moderate pricing, easy and laborsaving installation, long durability, minimal trimming waste when cutting according to your measurements from a roll.
- Successfully passed the toughest accredited tests for rat and mice penetration (respectively for rats 14 days and mice 70 days).
- Successfully passed accredited tests that concluded the Raxit Seals as a great climate barrier and water intrusion barrier.
- The Raxit Seal are available in rolls of up to 25 meter, despite its length of 25 meter, the rolls are compact which ensures; easy handling, storing and transportation.
- All materials used are non-toxic, the seal's color does not spread on surfaces and easy to clean (can be high pressure washed).
- Insect barrier at the bottom of the seal which ensures the Raxit Seal can fit closely to terrain. prevents small insects to pass under the seal.
- Review the Raxit Seal periodically for gnawmarks, or other damages. Contact your Pest Control Operator as required.

### ➔ PRODUCT SPECIFICATIONS

- **Seal length** - 1-25 meter.
- **Seal height** - 75mm & 110mm.
- **Seal thickness** - 3,8mm.
- **Weight** - 300 & 420 gram /meter.
- **Seal color** - Anthracite gray (more colors available upon request).
- **Distance between bottom edge and first steel wire** - 3mm i.e. too little for a mice to squeeze through.
- **Distance between inlaid steel wires** - 5mm.
- **Temperature range** - -40 celsius to 60 celsius.
- **Shore A hardness** - Around 80.
- **Thermal expansion and contraction** - Insignificant.



## **PEST PROOFING SOLUTIONS FOR ALL TYPES OF ENTRANCE SYSTEMS AND BUILDING COMPONENTS**

### **RAXIT SEALS' UNIQUE PATENTED TECHNOLOGY**

*The Raxit Seals pest proofing products are developed in the flexible and extremely durable rubber material Santoprene™. Along the length of the Raxit Seals are 1mm inlaid acid resistant stainless steel wires, which makes the seals impossible for rodents to gnaw through. The Raxit Seals have undergone – and successfully passed - the **toughest tests** for rodent penetration and general durability for any sweeps in the market. Making Raxit Seals the safest choice!*

**IMPORTANT:** All Raxit Seals have a waved/corrugated surface which prevents the inlaid steelwires from sliding.



### **RAXIT QUICK - FEATURES AND BENEFITS**

- The self fastening adhesive Hook and Loop system makes the Raxit Quick the easiest pest proofing seal to mount on the market, only a scissor is required for mounting.
- Successfully passed the toughest tests for rat and mice penetration (respectively for rats 14 days and mice 70 days).
- Extremely durable and flexible seal. The Santoprene™ material will return to its original shape, after deformation. Useful in entrance settings with uneven terrain.
- Despite being the safest choice for pest proofing, Raxit Seals are also a cost effective solution comparing to alternatives in the market.
- Successfully passed tests that concluded the Raxit Seals as a great climate barrier and water intrusion barrier.
- Professionally packed with an easy-to-understand mounting guide inside the packaging.
- Review the Raxit Seal periodically for gnawmarks, or other damages. Contact your Pest Control Operator as required.

**BEST IN TEST**

### **PRODUCT SPECIFICATIONS**

- **Seal length** - 1 meter.
- **Seal height** - 20mm, 30mm and 40mm.
- **Weight** - 200 gram.
- **Seal color** - Anthracite gray (more colors available upon request).
- **Self fastening hook / loop color** - black.
- **Distance between bottom edge and first steel wire** - 3mm i.e. too little for a mice to squeeze through.
- **Distance between inlaid steel wires** - 5mm.
- **Temperature range** - -40 celsius to 60 celsius.
- **Shore A hardness** - Around 80.
- **Thermal expansion and contraction** - Insignificant.
- **Use cases** - The Raxit Quick installation requires **NO** screws for installation, this means the seal may be installed on all types of entrance systems, also including glass doors and fire doors.





## **PEST PROOFING SOLUTIONS FOR ALL TYPES OF ENTRANCE SYSTEMS AND BUILDING COMPONENTS!**

### **RAXIT SEALS' UNIQUE PATENTED TECHNOLOGY**

The Raxit Seals pest proofing products are developed in the flexible and extremely durable rubber material Santoprene™. Along the length of the Raxit Seals are 1mm inlaid acid resistant stainless steel wires, which makes the seals impossible for rodents to gnaw through.

The Raxit Seals have undergone – and successfully passed - the **toughest tests** for rodent penetration and general durability for any sweeps in the market. Making Raxit Seals the safest choice!

**IMPORTANT:** All Raxit Seals have a waved/corrugated surface which prevents the inlaid steelwires from sliding.



### **RAXIT READY-TO-USE AUTOMATIC - FEATURES AND BENEFITS**

- Successfully passed the toughest tests for rat and mice penetration (respectively for rats 14 days and mice 70 days).
- Live tested - more than 2 million openings and closings on an automatic door over the course of 2 years. Which means it ensures cost effective maintenance comparing to alternative products.
- Extremely durable and flexible seal. The Santoprene™ material will return to its original shape, after deformation. Useful in entrance settings with uneven terrain.
- The pile weatherstrip is attached with a self-fastening hook / loop system, this means that it can easily be taken on and off, ensuring extremely easy and cost effective maintenance.
- Despite being the safest choice for pest proofing, Raxit Seals are also a cost effective solution comparing to alternatives in the market.
- Successfully passed tests that concluded the Raxit Seals as a great climate barrier and water intrusion barrier.
- Professionally packed with an easy-to-understand mounting guide inside the packaging.
- Review the Raxit Seal periodically for gnawmarks, or other damages. Contact your Pest Control Operator as required.

**BEST IN TEST**

### **PRODUCT SPECIFICATIONS**

- **Seal length** - 1 meter.
- **Seal height** - 20mm and 30mm.
- **Pile weatherstrip height** - 6mm, 8mm and 12mm.
- **Weight** - 380 gram /meter.
- **Seal color** - Anthracite gray (more colors available upon request).
- **Loop color** - black (more colors available upon request).
- **Aluminum color** - Natural and RAL 9005.
- **Distance between bottom edge and first steel wire** - 1mm i.e. too little for a mice to squeeze through.
- **Distance between inlaid steel wires** - 5mm.
- **Temperature range** - -40 celsius to 60 celsius.
- **Shore A hardness** - Around 80.
- **Thermal expansion and contraction** - Insignificant.



## **PEST PROOFING SOLUTIONS FOR ALL TYPES OF ENTRANCE SYSTEMS AND BUILDING COMPONENTS**

### **RAXIT SEALS' UNIQUE PATENTED TECHNOLOGY**

The Raxit Seals pest proofing products are developed in the flexible and extremely durable rubber material Santoprene™. Along the length of the Raxit Seals are 1mm inlaid acid resistant stainless steel wires, which makes the seals impossible for rodents to gnaw through. The Raxit Seals have undergone – and successfully passed - the **toughest tests** for rodent penetration and general durability for any sweeps in the market. Making Raxit Seals the safest choice!

**IMPORTANT:** All Raxit Seals have a waved/corrugated surface which prevents the inlaid steelwires from sliding.



### **RAXIT QUICK - FEATURES AND BENEFITS**

- The self fastening adhesive Hook and Loop system makes the Raxit Quick the easiest pest proofing seal to mount on the market, only a scissor is required for mounting.
- Successfully passed the toughest tests for rat and mice penetration (respectively for rats 14 days and mice 70 days).
- Live tested - more than 2 million openings and closings on an automatic door over the course of 2 years. Which means it ensures cost effective maintenance comparing to alternative products.
- Extremely durable and flexible seal. The Santoprene™ material will return to its original shape, after deformation. Useful in entrance settings with uneven terrain.
- The pile weatherstrip is attached with a self-fastening hook / loop system, this means that it can easily be taken on and off, ensuring extremely easy and cost effective maintenance.
- Despite being the safest choice for pest proofing, Raxit Seals are also a cost effective solution comparing to alternatives in the market.
- Successfully passed tests that concluded the Raxit Seals as a great climate barrier and water intrusion barrier.
- Professionally packed with an easy-to-understand mounting guide inside the packaging.
- Review the Raxit Seal periodically for gnawmarks, or other damages. Contact your Pest Control Operator as required.

**BEST IN TEST**

### **PRODUCT SPECIFICATIONS**

- **Seal length** - 1 meter.
- **Seal height** - 30mm.
- **Pile weatherstrip height** - 6mm, 8mm and 12mm.
- **Weight** - 200 gram.
- **Seal color** - Anthracite gray (more colors available upon request).
- **Self fastening hook / loop color** - black.
- **Distance between bottom edge and first steel wire** - 1mm i.e. too little for a mice to squeeze through.
- **Distance between inlaid steel wires** - 5mm.
- **Temperature range** - -40 celsius to 60 celsius.
- **Shore A hardness** - Around 80.
- **Thermal expansion and contraction** - Insignificant.
- **Use cases** - The Raxit Quick installation requires **NO** screws for installation, this means the seal may be installed on all types of entrance systems, also including glass doors and fire doors.



## PEST PROOFING SOLUTIONS FOR ALL TYPES OF ENTRANCE SYSTEMS AND BUILDING COMPONENTS

### ➔ RAXIT SEALS' UNIQUE PATENTED TECHNOLOGY

The Raxit Seals pest proofing products are developed in the flexible and extremely durable rubber material Santoprene™. Along the length of the Raxit Seals are 1mm inlaid acid resistant stainless steel wires, which makes the seals impossible for rodents to gnaw through. The Raxit Seals have undergone – and successfully passed - the **toughest tests** for rodent penetration and general durability for any rodent-proofing in the market.

**IMPORTANT:** All Raxit Seals have a waved/corrugated surface which prevents the inlaid steelwires from sliding.

### ➔ RAXIT DOCK LEVELER SEAL FEATURES AND BENEFITS

- **Tested to last:** The Raxit Seals have successfully passed the toughest tests for rat and mice penetration (respectively 14 days for rats and 70 days for 20 mice). Only Rodent Proofing entrance system seal with ETA Denmark's TGA Approval.
- **Industrial Strength:** Built tough with high-quality and extremely durable materials for enduring defense in commercial and industrial environments.
- **A Customizable Solution:** The Raxit Dock Leveler Seal can easily be tailored to fit dock leveler gaps ranging from 12mm - 40mm, effectively sealing off rodent access points.
- **Easy Installation:** Quick and simple installation minimizes downtime, allowing rapid deployment without disrupting operations.
- **Climate Barrier:** Successfully passed tests that concluded the Raxit Seals as a great climate barrier and barrier against water intrusion.
- **Review Periodically:** Review the Raxit Seal periodically for gnawmarks, or other damages. Contact your Pest Control Operator as required.



### ➔ PRODUCT SPECIFICATIONS

- **Seal length** - 1 meter.
- **Seal Width** - 40mm, can easily be cut horizontally to cover gaps between 20mm - 40mm.
- **Weight** - 350 gram.
- **Seal color** - Anthracite gray.
- **Distance between bottom edge and first steel wire** - 1mm i.e. too little for a mice to squeeze through.
- **Distance between inlaid steel wires** - 5mm.
- **Temperature range** - -40 celsius to 60 celsius.
- **Shore A hardness** - Around 65.
- **Thermal expansion and contraction** - Insignificant.
- **Fasteners** - Fasten with rivets or self-drilling screws.





## **PEST-PROOFING SOLUTION DESIGNED FOR DOCK LEVELERS AND LOADING RAMPS.**



### **RAXIT SEALS' UNIQUE PATENTED TECHNOLOGY**

The Raxit Seals pest proofing products are developed in the flexible and extremely durable rubber material Santoprene™. Along the length of the Raxit Seals are 1mm inlaid acid resistant stainless steel wires, which makes the seals impossible for rodents to gnaw through. The Raxit Seals have undergone – and successfully passed - the **toughest tests** for rodent penetration and general durability for any rodent-proofing in the market.

The Raxit Dock Leveler seal for small/medium gaps have an adhesive backing, which makes fitting easier. **However, screws or rivets must be used for fastening the strip.**



### **RAXIT DOCK LEVELER SEAL FEATURES AND BENEFITS**

- **Tested to last:** The Raxit Seals have successfully passed the toughest tests for rat and mice penetration (respectively 14 days for rats and 70 days for 20 mice). Only Rodent Proofing entrance system seal with ETA Denmark's TGA Approval.
- **Industrial Strength:** Built tough with high-quality and extremely durable materials for enduring defense in commercial and industrial environments.
- **Easy Installation:** Quick and simple installation minimizes downtime, the self-adhesive tape ensures that the seal can be easily be fitted prior to fastening it with screws or rivets.
- **Pile Weatherstrip Included:** Each strip comes with a convenient, easy-to-attach velcro pile weatherstrip, ensuring the dock-leveler gap is effectively sealed against climate and light.
- **Climate Barrier:** Successfully passed tests that concluded the Raxit Seals as a great climate barrier and barrier against water intrusion.
- **Review Periodically:** Review the Raxit Seal periodically for gnawmarks, or other damages. Contact your Pest Control Operator as required.

**REMOVEABLE PILE WEATHERSTRIP FOR PERFECT SEALING!**



### **PRODUCT SPECIFICATIONS**

- **Seal length** - 1 meter.
- **Seal height** - 40 mm.
- **Seal Width** -
  - **Small** - 6mm (up to 12-14 mm with pile weatherstrip).
  - **Medium** - 12mm (up to 18-20mm with pile weatherstrip).
- **Weight** - 350 gram.
- **Seal color** - Orange.
- **Distance between bottom edge and first steel wire** - 1mm i.e. too little for a mice to squeeze through.
- **Distance between inlaid steel wires** - 5mm.
- **Temperature range** - -40 celsius to 60 celsius.
- **Shore A hardness** - Around 65.
- **Thermal expansion and contraction** - Insignificant.
- **Fasteners** - Fasten with rivets or self-drilling screws.

