



IRRITANT

Contains: Methyl 0,0,0"
-BUTYL-2-ONE-
TRIDIMOSILANE

May cause sensitisation by
skin contact.
Avoid contact with skin.
Wear suitable gloves.

Supplied and distributed by:
J V Barrett & Co Ltd
St Ivel Way, Warmley
Bristol, BS30 8TY

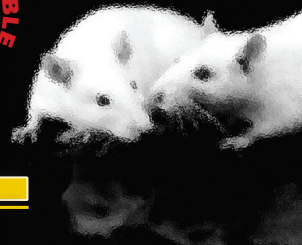


Barrettine
Environmental Health



ROMAX

RODENT SEAL



Romax Rodent Seal has been developed to prevent the ingress of rodents in most environments and for the Food Industry for general sealing off of sensitive areas against insects etc. Romax Rodent Seal contains metal fibre technology encapsulated within a silicone body to prevent erosion of the wire fibres.

TYPICAL APPLICATIONS

- Sealing of wall/floor expansion joints where rodent ingress/egress is recurrent.
- Sealing holes to brickwork, timber, windows, door frames etc.
- Use within food preparation environments to seal around waste pipes, services etc.
- For use where grommets have been chewed to electrical conduits etc.
- For large holes this product can be spread over a Polyethylene Sheet to a depth of 6mm, once cured this can be cut to any shape, simply apply Romax Rodent Seal to the area for fixing and over lay the cut out.

APPLICATION

Joint surfaces must be clean, dry and free from loose material, dust or grease.

TO USE

Cut off cartridge seal, cut nozzle to the required size, attach nozzle to cartridge. Extrude the sealant firmly against the joint surfaces to ensure complete contact. Tool the sealant into the joint to compact, within 5 minutes from application before skin begins to form.

STORAGE

Cool dry conditions. Keep out of the reach of children.